

# SHAPING TOMORROW TOGETHER



MARSAL FAMILY  
SCHOOL OF EDUCATION  
UNIVERSITY OF MICHIGAN

#3

BEST  
EDUCATION  
SCHOOLS

#2 EDUCATION  
PSYCHOLOGY

#2 HIGHER  
EDUCATION  
ADMINISTRATION

#2 SECONDARY  
TEACHER  
EDUCATION

#3 ELEMENTARY  
TEACHER  
EDUCATION

#3 CURRICULUM  
& INSTRUCTION

#5 EDUCATION  
POLICY

#9 EDUCATIONAL  
ADMINISTRATION

40,000 ALUMNI  
from 80 COUNTRIES

Shaping Education for over

100  
years

ESTABLISHED IN 1921

70+

Member  
Esteemed Faculty



ELIZABETH BIRR MOJE  
DEAN

JOIN US!  
GO BLUE!

### From Dean Moje

Disrupt to transform. That's what it takes to build education in ways that are equitable and just. And that is exactly what we are doing at the Marsal Family School of Education.

By challenging taken-for-granted practices and rejecting inaccurate narratives about education, we are paving the way for powerful transformation. Some people say the education crisis is just too big to fix, but we're doing it at the Marsal School alongside partner organizations and communities around the world.

At Marsal, we are using an intersectional lens to craft strategies, tools, and practices for intervening on the most pressing education problems in our society.

We know there is no more important investment than education for opening doors to economic and personal prosperity and ensuring civically engaged youth and adults. However, we also know that education can oppress and stratify when systems aren't skillfully built.

Making education fulfill its promise takes expertise, courage, and compassion. It takes individual accountability and a collective commitment to create the education landscape we envision. With perseverance and boldly open minds, we are rebuilding outdated and inequitable systems, giving rise to education that is socially just, inclusive, and accessible.

**We're redefining education for the benefit of all—challenging what's in practice today, so that we can shape a better tomorrow.**

**In 2023, our school received a transformational gift from a family with two generations of U-M education alumni.**

The Marsal family's giving advances initiatives to prepare and support a diverse population of teachers, build robust partnerships with schools and communities, and conduct research in collaboration with education practitioners. In honor of the Marsal family's generous support and tireless advocacy for education, the U-M Board of Regents renamed our school the Marsal Family School of Education, which we fondly refer to as "Marsal Education."

CONTENTS

DEAN’S MESSAGE	3
DEGREE OFFERINGS	5
UNDERGRADUATE	6
Minor in Education	
<i>Education for Empowerment</i>	
Bachelor of Arts in Education	
<i>Learning, Equity, and Problem Solving for the Public Good (LEAPS)</i>	
TEACHER CERTIFICATION	8
UNDERGRADUATE	10
Bachelor’s Degree w/ Elementary Teacher Certification	
Bachelor’s Degree w/ Secondary Teacher Certification	
MASTER’S	12
Master’s Degree w/ Elementary Teacher Certification	
Master’s Degree w/ Secondary Teacher Certification	
MASTER’S	14
Master’s Degree in Educational Studies	
Master’s Degree in Higher Education	
DOCTORAL	18
CERTIFICATES & ENDORSEMENTS	20
CAREERS	21
DIVERSITY, INCLUSION, JUSTICE, EQUITY ( <i>dije</i> )	22
RESEARCH	24
PARTNERSHIPS	25
STUDENT LIFE	26
FUNDING YOUR DEGREE	28
NEXT STEPS	30

WE TURN LEARNERS INTO LEADERS

COURTNEY STEWART  
MASTER OF ARTS W/ELEMENTARY  
TEACHER CERTIFICATION AND  
ESL ENDORSEMENT, '18



DELANEY BOND  
MASTER OF ARTS W/ELEMENTARY  
TEACHER CERTIFICATION, '23



# Our Degree Offerings

	Program	Program Credits	Length	Internship or Field Placement	Application Deadlines	Program Start	ESL Endorsement	International Baccalaureate	Trauma-Informed Practice	Learning Experience Design	Dual Degree	Part Time
							Additional Certificates				Options	
UNDERGRADUATE	MINOR	15	Varies	✓	Rolling	Varies						
	LEARNING, EQUITY, AND PROBLEM SOLVING FOR THE PUBLIC GOOD (LEAPS)	124	4 years	✓	2/1	Fall						
	W/ELEMENTARY TEACHER CERTIFICATION	66	4 semesters	✓	Priority 2/1**	Fall	✓		✓			
	W/SECONDARY TEACHER CERTIFICATION	32-35+ endorsement area credits	3 semesters	✓	Priority 2/1**	Winter	✓	✓	✓		✓*	
EDUCATOR PREPARATION	W/ELEMENTARY TEACHER CERTIFICATION (ELMAC)	62	1 year	✓	Priority 11/15**	Summer	✓		✓			
	W/SECONDARY TEACHER CERTIFICATION (SECMAC)	34-37+ endorsement area credits	1 year	✓	Priority 11/15**	Summer	✓	✓	✓			
	EDUCATIONAL STUDIES	30	1-1.5 years	✓	Priority 1/2**	Fall			✓	✓	✓	✓‡
	HIGHER EDUCATION	30-34	1-1.5 years	✓	1/2** part-time 10/15	Fall part-time Winter			✓	✓	✓	✓§
DOCTORAL	EDUCATIONAL STUDIES HIGHER EDUCATION ENGLISH AND EDUCATION EDUCATION AND PSYCHOLOGY	58-62			Variable	Fall						

\*Students can earn degrees in LSA and the Marsal School simultaneously through the Multiple Dependent Degree Program. A non-degree certification option is also available.

\*\*These programs encourage application submission by the deadlines above for optimal scholarship consideration. Applications may be accepted after these dates as space allows.

‡ Courses typically take place in the day during business hours.

§ Part-time status is available to full-time U-M employees.

Additional coursework may increase time to degree completion.

# Education for Empowerment Minor

Turn your passion for education into action for justice.

With the Education for Empowerment minor, you'll explore the relationship between education and power, understand where opportunities to advance democracy exist outside the classroom, and be challenged to imagine how we can further humanize educational spaces. No matter what path you take beyond graduation, you'll grasp how teaching and learning can drive equity and social change.

This minor is designed for students whose calling intersects with education, and for those who understand its critical role as a tool for freedom and empowerment.

The minor offers five distinct pathways. Choose the one that aligns with your passion and plans.

## MINOR PATHWAYS

- Advancing Equity Through Education Policy
- Children and Youth in Context: Culture, Communities, and Education
- Coaching and Leadership
- Education in a Global Context
- Design Your Own Pathway

## You'll gain experience as you learn.

Through one or more internship experiences, you'll gain practical field experience in education work, which may take the shape of teaching and learning activities, but in all cases will align with education and your selected pathway.

## The minor adds to your education.

- Become a part of the work toward educational equity.
- Broaden your perspective and the practical applications of your major.
- Explore the points at which your academic pursuit intersects with teaching, education policy, and social justice.

## What it will take to earn your minor.

You'll complete 15 credit hours and 120 hours of internship experience to earn your minor, no matter which pathway you pursue. This total includes 3 foundation credits, 9 elective credits, 2 internship credits, and 1 capstone credit.

**EDUC 240: COACHING AS LEADING AND LEADING AS COACHING**  
Greg Dooley interviews Coach Sherrone Moore



**EDUC 480: EDUCATION FOR EMPOWERMENT CAPSTONE**  
Professor Kendra Hearn discusses education systems with students



Choose from five pathways



Complete an internship in an education setting

# LEAPS: Bachelor of Arts in Education

Become a learning leader and problem-solver  
in a world where technical solutions are not enough.

Prepare for a wide range of professions and career paths—including education, policy, community development, STEM, health sciences, and business—through a new education major: Learning, Equity, and Problem Solving for the Public Good (LEAPS).

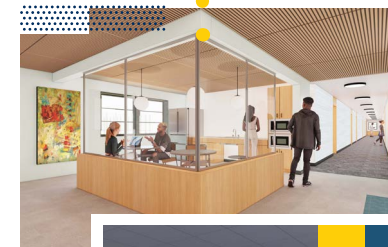
In LEAPS, you will develop strong collaboration, communication, and leadership skills by combining coursework with internships, community-based work, and research projects that work to address persistent social and systemic inequities. In partnership with Detroit organizations, communities, and companies—and alongside your peers (called a cohort) and faculty—you'll build relationships and work together with people who are committed to your personal and academic growth.

Live in a **newly renovated residence hall** on a beautiful campus in Detroit during your first year of college.

## TOP THINGS TO KNOW

### ABOUT THE NEW EDUCATION MAJOR

- Apply during your last year of high school for this **4-year degree program**.
- Enjoy a breadth of **experiences on the Ann Arbor campus** while benefiting from a smaller personal and academic network.
- Choose a specialization or pre-professional interest known as a **concentration** in your third year.
- Build a deep understanding of human relationships, justice and equity, and complex problem solving—**skills and mindsets needed in every corner of industry and society**.
- Engage with activities and learning opportunities across Ann Arbor and Detroit with **free, convenient transportation**.
- Build a portfolio of rich evidence for future employers or graduate schools



# Educator Preparation

Know what it takes to make a difference in the lives of learners.

Outstanding teachers don't just happen. They employ research-based practices with a mastery of critical classroom skills and experience observing, listening, rehearsing, enacting, and reflecting. This is why U-M is recognized worldwide for preparing exceptionally qualified educators.

At the Marsal Family School of Education, whether you pursue your bachelor's or master's degree with elementary or secondary teacher certification, you can expect to benefit from:

- A collaborative and supportive cohort model, drawing on a community of peers from day one
- Structured classroom placements, beginning in your first weeks and evolving throughout the program to meet your changing needs as a beginning teacher
- A curriculum focused on creating just and equitable education for all students and communities
- Experiences in schools with which we have long-standing partnerships
- Learning in, with, and from the communities we serve
- Mentorship and individualized support from faculty members, program staff, field instructors, and classroom teachers
- Courses led by award-winning faculty
- Training in project- and place-based teaching
- Urban teaching pathway
- Opportunities for 3-year early career residency

## What certification means.

During the program, you'll complete coursework, fieldwork, and the Michigan Test for Teacher Certification (MTTC) to meet the requirements for your teaching certificate in the state of Michigan. You'll also have the option to transfer your credentials toward certification in another state.

## How you'll be prepared to teach.

- Teach children and youth as whole beings who require and deserve socio-emotional teaching, as well as intellectual growth
- Accentuate diversity, inclusion, justice, and equity in your curriculum and teaching practices
- Help youth recognize and draw on the cultural wealth of their families and communities
- Use the power of your voice to create more equitable outcomes for all students
- Evaluate your students' learning and use that information to differentiate your instruction
- Employ learning technologies with confidence

**OBSERVE  
LISTEN  
REHEARSE  
ENACT  
REFLECT**



**SHARAE FRANKLIN**  
BACHELOR OF ARTS  
IN ELEMENTARY  
EDUCATION, '18

**720** hrs.

In K-12  
Classrooms  
AVERAGE HOURS  
STUDENTS SPEND



[marsal.umich.edu](http://marsal.umich.edu)

# Teach Blue Initiative

Providing opportunities for all who seek to enter the greatest profession.

With the Teach Blue Initiative, our vision is to introduce opportunities and resources that work together to support educators at all stages of their careers. This initiative is central to our efforts to elevate teachers' incredible contributions to society.

As leaders in teacher education with robust school and community partnerships, we are uniquely poised to meet the prevailing challenges to the profession through a fresh approach to recruitment and retention.

# 100%

of teacher education students are  
**Eligible for Financial Support**



## ELEVATE

**Teach Blue Fellows**  
*Advanced Career Teachers*

Teach Blue Fellows are experienced teachers who work alongside their peers and Marsal School faculty members to define a problem of practice, learn more about the surrounding issues, and craft solutions.



## SUPPORT

**Teach Blue Residents**  
*Early Career Teachers*

Upon graduation, our graduates can apply to continue to be supported as "teaching residents." Residents are fully certified teachers who are supported for three additional years by Marsal School faculty and staff.



## INVEST

**In Teach Blue Scholars**  
*Marsal Teacher Education Students*

The Teach Blue Commitment offers funding packages that significantly offset the cost of education degrees for many students seeking teacher certification—up to and including tuition free degrees!



## RECRUIT

**Future Teachers**  
*Pre-College Students*

Beginning with efforts to recruit diverse students into the Educator Preparation Program, Teach Blue helps young people discover teaching and consider a career trajectory that begins as an educator.



# Bachelor of Arts or Science with Elementary Teacher Certification

Develop the tools to prepare young learners to build a more equitable world.

A healthier, more vibrant society begins with young people who have the intellectual and emotional grounding to identify injustice, and dismantle it. When you earn a bachelor's degree with elementary teacher certification, you'll help advance education and elevate communities, one student at a time.

The undergraduate elementary teacher education pathway will prepare you to:

- Teach **pre-kindergarten to grade 6** in all subjects
- Enact evidence-based practices in the classroom
- Meet ethical obligations for teaching and advocate for educational justice
- Draw on your subject knowledge for effective teaching

CHEYANN KANKA  
BACHELOR OF ARTS  
IN ELEMENTARY  
EDUCATION, '22



Take courses on a local elementary or middle school campus

## Teacher Education Preferred Admission (TEPA)

Explore education during your first two years of study through the TEPA program. Join this tight-knit community, develop skills to prepare you for a career as an educator, and get guaranteed admission into our junior-admitting Educator Preparation Program.

# Bachelor of Arts or Science with Secondary Teacher Certification

Help adolescents learn to visualize a better world, **and make it so.**

You'll learn to see and advocate for middle school and high school students for who they truly are: whole individuals who need socio-emotional and intellectual growth to thrive. Further, you'll elevate your skills as an educator by learning how to connect with students, teachers, and communities. Through it all, you'll play a key role in creating a better, more equitable world for all.

The undergraduate secondary teacher education pathway will prepare you to:

- Teach **grades 6 through 12** in the endorsement area of your choosing\*
- Teach literacy in all disciplines, which is essential to build knowledge
- Illuminate content in ways that make developmental sense to adolescents
- Work in school settings that are racially, culturally, ethnically, and socio-economically diverse

*\*Exciting grade band and endorsement area changes forthcoming (Fall 2026)*



ISRA ELSHAFEI  
BACHELOR OF ARTS  
IN SECONDARY  
EDUCATION, '21

## TEPA RESOURCES:

- NEW: Teach Blue Scholarships available for all TEPA students
- A community of students, faculty, and staff that shares your passion for education
- Early access to Marsal School Academic and Career Advisors
- Weekly e-newsletters sharing news, event invitations, and volunteer opportunities
- TEPA social and learning events

**dual**  
DEGREE

Earn a degree  
in another unit  
and an education  
degree from Marsal

**+cert**

Add secondary  
teacher certification  
to your LSA  
degree for more  
career options

## ENDORSEMENT AREAS

Arabic	Latin
Biology	Mandarin
Chemistry	Mathematics
Earth/Space Science	Music
Economics	Physics
English	Political Science
French	Psychology
German	Social Studies
History	Spanish
Integrated Science	

## ADDITIONAL ENDORSEMENT

English as a Second Language

# Master of Arts with Elementary Teacher Certification (ELMAC)

Elevate your ability to transform the classroom  
into a place of positive change.

Creating a lifelong learner begins with a teacher who knows how to tap into a child's natural love of learning. Develop the professional and personal knowledge, dispositions, and skills required to engage diverse groups of children in thoughtful learning. In doing so, you'll show that an exceptional learning experience can set a child up for a life of personal success and social good.

The ELMAC pathway will prepare you to:

- Teach **pre-kindergarten to grade 6** in all subjects
- Enact scientifically proven practices in the classroom
- Meet ethical obligations for teaching and advocate for educational justice
- Draw on your subject knowledge for effective teaching

## Earn your degree.

ELMAC is structured to allow you to complete all the requirements of a master's degree and teacher certification in **one calendar year** (beginning and ending in June).



**PAIGE WINT**  
MASTER OF ARTS W/ ELEMENTARY  
TEACHER CERTIFICATION  
AND ESL ENDORSEMENT, '22



Join a cohort with  
diverse career  
and educational  
experience



Be immersed in  
supported teaching  
experiences all year

**1** year

Master's degree  
+teacher certification

# Master of Arts with Secondary Teacher Certification (SecMAC)

Show adolescents the power of voice,  
and prepare them to use it.

Master the intricacies of helping middle and high school students grow and thrive socially, emotionally, and intellectually. By using justice and equity as lenses for examining the world, supported by evidence-based practices and purposeful classroom experience, you'll help prepare students to make a positive difference in society.

The SecMAC pathway will prepare you to:

- Teach **grades 6 through 12** in the endorsement area of your choosing\*
- Teach literacy in all disciplines, which is essential for building knowledge and foundational to educational linguistics
- Illuminate content in ways that make developmental sense to adolescents
- Work in school settings that are racially, culturally, ethnically, and socio-economically diverse

*\*Exciting grade band and endorsement area changes forthcoming (Fall 2026)*

## Earn your degree.

SecMAC is structured to allow you to complete all the requirements of a master's degree and teacher certification in **one calendar year** (beginning and ending in June).

**TIM CHEN**  
MASTER OF ARTS  
W/ SECONDARY TEACHER  
CERTIFICATION, '19



## ENDORSEMENT AREAS

Arabic	Integrated Science
Biology	Latin
Chemistry	Mandarin
Earth/Space Science	Mathematics
Economics	Physics
English	Political Science
French	Psychology
German	Social Studies
History	Spanish

## ADDITIONAL ENDORSEMENT

English as a Second Language



Bring your passion  
for a subject area  
to life for youth



Learn ways to  
support multilingual  
English Learners



Support teachers in  
facilitating a camp-like Summer  
Learning Academy in Ann Arbor

# Master of Arts or Science in Educational Studies

Gain specialized knowledge to make meaningful contributions to education.

Fuel your curiosity, engage your intellect, and deepen your knowledge about key issues in education. When you pursue your master's in Educational Studies, you'll engage in myriad opportunities to discuss and debate the issues facing education. As you do so, you will expand and deepen your understanding and knowledge. Ultimately, you'll be equipped to confront, disrupt, and shift the power dynamics that lead to inequity.

You'll choose your area of concentration. Whichever path you take, you'll be working at the forefront of education research, policy, and practice, while also furthering your

knowledge and developing skills that align with your passion and career focus.

## Where your degree can take you:

- Policy-related work
- Community-based organizations
- Government agencies
- K-12 schools
- Doctoral studies

## Earn your degree.

Many full-time students complete the degree in 3 semesters (1.5 years) by taking required coursework and an internship during their first academic year. Students typically further develop their professional skill set through a summer internship or employment before completing a final semester of courses and graduating in December. Students may complete the program at an accelerated pace of 12 months. Part-time students are also welcome, many of whom work full-time as K-12 educators.



EDUCATIONAL STUDIES  
MASTER'S STUDENTS  
AT ORIENTATION

### CONCENTRATIONS

- Designing for Innovation: Learning, Instruction, and Technologies
- Educational Equity, Justice, and Social Transformation
- Educational Leadership and Policy
- Research for Educational Improvement

### DUAL DEGREE

- Master of Arts in Educational Studies and Master of Business Administration



Benefit from an **innovative curriculum** that blends theory and practice, ensuring you are well-equipped to address contemporary challenges in education.

Learn from — and be mentored by — **nationally recognized scholars** and practitioners in the field of education who bring their extensive experience and research insights to the classroom.

Engage in **groundbreaking research** projects that allow you to explore your interests and contribute to advancement in key areas, including teaching, learning, equity, policy, and leadership.

# Master's Degree in Higher Education

Choose your path to building a more equitable and inclusive educational system.

Learn policy and practices that serve different facets of education related to the college or university setting, all in service of the public good and in support of an equitable and inclusive society.

Determined by your specific passion and career path, you can pursue one of six concentrations with the Center for the Study of Higher and Postsecondary Education (CSHPE) master's degree, in addition to two dual-degree paths.

No matter which concentration you choose, a Master of Arts in Higher Education includes coursework and experiences that will prepare you to shape the future of higher education. You will:

- Interact with students who have different professional backgrounds and diverse career goals
- Learn with your fellow master's students in core courses, as well as with doctoral students in cognate and elective courses
- Build your capacity to understand and address issues of concern in higher education through research and practice
- Transform higher education to increase student access and success

## Earn your degree.

Single-degree concentrations require around 30-34 credits to complete, which include concentration-specific, elective, and core credits. An internship is a pivotal component of the program.

### CONCENTRATIONS

- Diversity and Social Justice in Higher Education
- Individually Designed
- Institutional Research
- Management and Organizations
- Public Policy
- Student Access and Success

### DUAL DEGREES

- Master of Arts in Higher Education and Master of Business Administration
- Master of Arts in Higher Education and Master of Public Policy

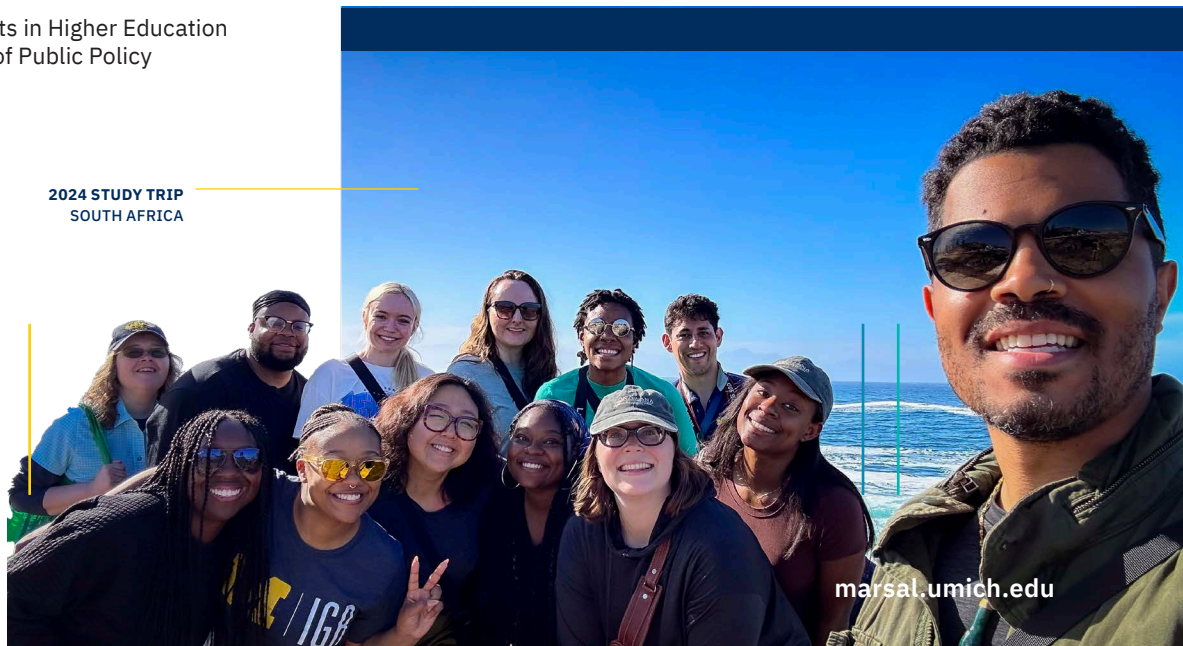
## You'll put your coursework to the test.

All full-time students complete a two-semester paid internship in a professional placement related to higher education.

CSHPE students have interned with the following organizations and many others:

- Advising Center in the College of Engineering
- Center for Education Design, Evaluation, and Research
- Global Scholars Program (living-learning community)
- Center for Educational Outreach
- Office of Budget and Planning
- Office of New Student Programs
- Office of Undergraduate Admissions
- Program on Intergroup Relations
- Spectrum Center

2024 STUDY TRIP  
SOUTH AFRICA



**Personalize your curriculum**

**Learn from experts in the field**

**Join a supportive network of peers & alumni**

### STUDY TRIPS

Additional valuable learning experiences are the Master's Research Opportunity Program (MROP) and study trips to both US and international locations during the summer.



## *Doctoral Degree in Educational Studies*

Sharpen your body of knowledge.  
 Make incisive contributions  
 to your field.

A doctorate in educational studies is more than consuming knowledge—it is about creating knowledge that allows policymakers and practitioners to see the world of education in new ways. Your role as a doctoral student is no longer to accept research or knowledge as it appears on the page—it is to define the very boundaries of the page and inscribe new ways of teaching, learning, leading, and understanding.

You will develop skills for collecting, analyzing, and writing about data at the heart of educational problems and phenomena. And when you've completed and defended your thesis, no matter your area of concentration, you'll rise to lead your field, and move individuals and institutions closer to a socially just education system.

## *Doctoral Degree in Higher Education*

Deepen your impact. Drive change  
 toward a more inclusive system of  
 higher learning.

While earning your doctoral degree from the Center for the Study of Higher and Postsecondary Education, you'll tap into a diverse and collaborative community that will help you surface deeply rooted issues and question the educational status quo.

No matter your concentration, having earned your doctorate, you'll have the power to cut to the core of inequity and advance social justice. Even more, you'll hold higher education accountable to its imperative to serve the public good, and help fulfill the promise of an educational system that meets the needs of every individual and elevates society as a whole.

Pursue your doctoral degree in higher education in one of four concentrations:

- Academic Affairs and Student Development
- Organizational Behavior and Management
- Public Policy in Postsecondary Education
- Research, Evaluation, and Assessment





## *Doctoral Degree in Education & Psychology*

Apply psychological research to  
address learning and development  
in social contexts.

Combine the disciplines of education and psychology—and use the power of both—to make meaningful changes in educational practices and systems. You'll form a close network of peers with unique experiences and perspectives that will help inform your work. Ultimately, you'll be in a strong position to publish and be recognized for innovative research that explores the intersection of psychology, learning, teaching, and development.

The Combined Program in Education and Psychology offers a rare opportunity to make bold intellectual strides as you push the boundaries of what's known and cast a vision for what could be.

## *Doctoral Degree in English & Education*

Turn your love for—and the power of—language into a life-changing  
teaching tool.

Push to the edges of English and education, and establish new areas of learning within a diverse and supportive community of scholars, peers, and alums—people who will form the heart of your network, which will serve you throughout your career as you advance understanding of how the English language is transmitted in learning environments of all kinds.

# Certificates & Endorsements

Elevate your prospects, and amplify your power to do good.

The Marsal School offers a range of certificate and endorsement programs to add to your degree and bring about positive change wherever you take your career.

ELD ABROAD  
SPRING SEMESTER  
IN CUERNAVACA, MEXICO



CERTIFICATES

## International Baccalaureate (IB)

Develop inquiring, knowledgeable, and caring young people who will help create a better and more peaceful world through intercultural understanding and respect, supported by challenging programs of international education and rigorous assessment.

## Learning Experience Design

Place yourself at the nexus of design, learning theory, and educational technology, and develop the competencies for conceptualizing and realizing online and technology-enhanced learning environments.

## Trauma-Informed Practice

You'll learn what it means to educate and care for children and youth whose lives have been affected by trauma, with attention to how knowledge about trauma informs your practice and leadership, and how it applies to interprofessional collaboration.

ENDORSEMENTS

## English as a Second Language (ESL)

You can elect to earn this PreK–12 Michigan Department of Education ESL Endorsement to improve professional marketability and flexibility. You'll complete most of the English Language Development (ELD) coursework during additional spring or summer semesters while enrolled in the elementary or secondary certification program, at either the undergraduate or master's level. Teacher education interns in both undergraduate and master's programs can elect to go abroad to Cuernavaca, Mexico, as part of their ELD course sequence.

ALTERNATIVE TEACHER CERTIFICATION

## Michigan Alternative Route to Certification (M-ARC)

As Michigan's longest running state-approved alternative route to teacher certification program, M-ARC is a three-year continuing education program designed to address teacher shortages by preparing people to teach while they work as teachers in Michigan schools.

# Careers

## Put your degree into action.

Marsal School graduates enjoy fascinating and meaningful careers in education, government, nonprofit, and industry sectors. We are proud that our alumni across every program report high employment and job satisfaction rates each year.

Beginning well before graduation and continuing years after, the Marsal School's career services team supports our community with comprehensive and tailored services and resources. Whether you came to U-M with an idea of your desired career trajectory or you are still discovering how you will use your expertise in the workforce, you will benefit from education-specific career resources.

- Personalized career advising
- Resume and cover letter writing support
- Workshops and panels
- Networking events
- K-12 certification renewal
- Mock interviews
- Jobs and internships database

### LEARNING LEVERS PRIZE COMPETITION

Xuechen Liu (Master of Arts in Educational Studies, '22) presents at the annual James A. Kelly Learning Lever Prize Competition, which features student projects designed to enhance learning in PreK-12 education

**MOCK INTERVIEWS,**  
an event for graduating teacher education students to meet with real hiring managers and practice interview skills



In our teaching, research, and service, **Diversity, Inclusion, Justice, and Equity (*dije*)** are at the core of our identity. We engage in this work inwardly—looking at our own strategies, practices, and tools—to be able to fulfill our school’s mission authentically and with integrity.

DIVERSITY  
INCLUSION  
JUSTICE  
EQUITY

# Our *dije* work is never done.

The Marsal School is home to one of the most racially diverse populations of graduate students and faculty on the University of Michigan-Ann Arbor campus. We are committed to creating a space in which all community members feel that they belong and have a voice. We depend on diverse experiences and perspectives among our community to challenge, inform, and energize our work.

Students, faculty, and staff have organized the events you see here. Each year the dije Office supports the development of new programs and events based on the interest of community members.

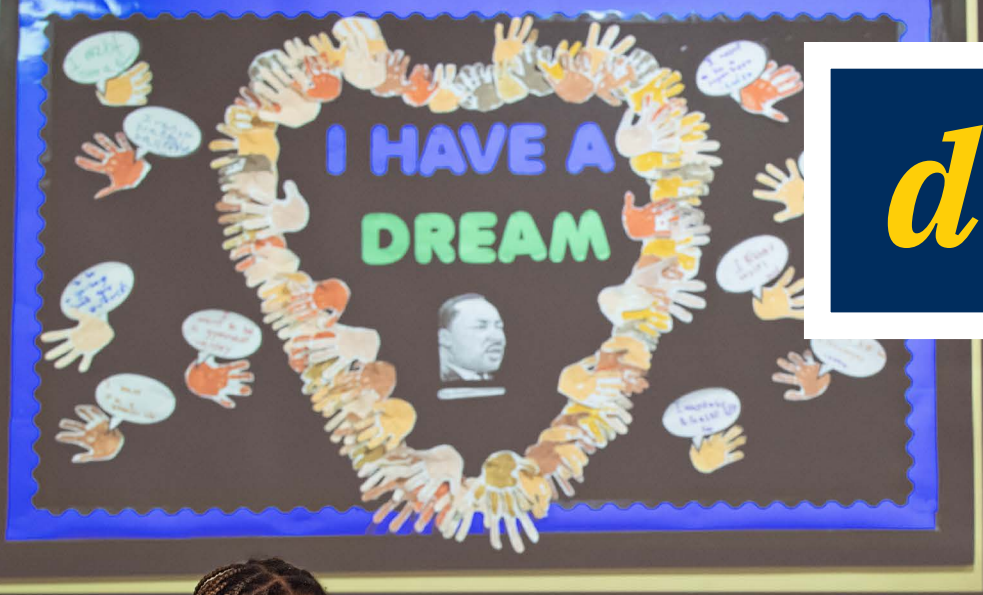
SHAPING

*a better*  
TOMORROW.

**CLAYFUL CREATIONS**  
The Educational Studies program and dije Office hosted “Clayful Creations,” a playful and creative pottery class led by writer and ceramic artist Gabrielle Ione Hickmon



Distinguished speakers who are thought leaders in the study of *dije*



**dije ART GALLERY AND STUDY HALL**  
The dije Student Advisory Board, which is composed of Marsal students, chose "Seeing the Unseen: Art and Resistance in Education" for the dije Art Gallery theme



ANNUAL MLK DAY  
CHILDREN & YOUTH PROGRAM



Coursework & field experiences offered through a dije lens



Awards recognizing the contributions of students, faculty, and staff



Opportunities for community-based learning

We conduct research that addresses the **most critical issues in education**, collectively pursuing a diverse range of scholarly inquiry with our partners in a multitude of **real-world contexts**. Students, faculty, and communities come together to pursue the goal of education equity and justice through **a deep commitment to public scholarship**.

# Research

This is where the curious come to investigate education policies and practices.



HOSTED BY THE CREATE CENTER, THE YOUTH-ENGAGED RESEARCH SYMPOSIUM FEATURED PRESENTATIONS BY YOUTH RESEARCHERS, COMMUNITY MEMBERS, U-M FACULTY, AND U-M GRADUATE STUDENTS.

70+

Active Research Grants

\$40M+

In Research Expenditures in 2023

#1

Center for World University Rankings

In Education & Education Research

# Partnerships

Learn in, with, and from communities.

Launched in 2010, the **Mitchell Scarlett Huron Teaching and Learning Collaborative** is a partnership with the Ann Arbor Public Schools district. These schools offer grades PreK-12, featuring an optional IB curriculum. The Collaborative supports continuous opportunities for student learning driven by high academic standards and innovations in curriculum, instructional practices, professional learning, and community involvement.

Students in the Educator Preparation Program participate in “embedded courses” at Mitchell Elementary and Scarlett Middle Schools. These are Marsal School courses taught on the PreK-8 campus that seamlessly integrate coursework and teaching practice.

Launched in 2018 and located on a historic campus in the heart of northwest Detroit, the **Marygrove Learning Community: a Detroit P-20 Partnership** is a cradle-to-career educational partnership featuring an early education center, a public K-12 school, family and community resources, and the Michigan Education Teaching School, which provides preservice training and early career residency support for candidates interested in teaching for social justice in urban settings. The Marygrove Learning Community features an aligned curriculum that engages students in project- and place-based learning with a focus on design thinking and social justice. It is a unique setting for a first-of-its-kind model for teacher preparation called the Teaching School.

The Teaching School, with its similarities to the medical education model of teaching hospitals, is designed to improve the preparation and retention of early career teachers. Marsal School students have the option to join the Marygrove community as teaching interns. Once interns graduate with teacher certification, they may apply to become teaching residents. Residents are certified, full-time, paid employees of Detroit Public Schools Community District who benefit from an additional three years of on-site mentorship and support provided by attending teachers and U-M faculty and staff.

## FALL 2024:

U-M students in the new education major, LEAPS, are joining the Marygrove Learning Community

ROBOTICS CLASS AT THE SCHOOL AT MARYGROVE

MARYGROVE HIGH SCHOOL STUDENTS VISIT U-M CAMPUS



**ANA MARIA LOPEZ**  
Master of Arts  
w/ Elementary Teacher  
Certification and ESL  
Endorsement, '22,  
teaches first grade  
at The School at  
Marygrove Elementary

SUMMER ESL ACADEMY



GO BLUE! M

RANKED A TOP  
COLLEGE TOWN  
IN THE U.S.A.



## Welcome home.

Located in one of America's most beloved college towns only 35 miles from downtown Detroit, the UM-Ann Arbor campus provides countless opportunities to explore what interests you and engage with a community that you will carry with you for the rest of your life.

Whether you're leaving home for the first time or moving your family to Ann Arbor, you will find a home here because this campus abounds with interesting events, support services for students, and organizations that bring people together.



BE SPIRITED.  
EXPLORE MORE.  
GET INSPIRED.



Join one—or 20!—of the  
**1600 student clubs**

Float down the Huron River  
on a hot day

Help construct a puppet for the  
annual Festifools parade

Visit the  
**14 free museums**  
on campus

Listen to a concert  
in Hill Auditorium

Feed a squirrel on the diag  
*(the squirrel club provides peanuts)*

**Paint “The Rock”**

Watch one of the  
**29 Men’s & Women’s  
Varsity teams** compete

Dip a toe in one of the  
four Great Lakes  
that border Michigan

Hit the trails at  
Nichols Arboretum

Eat at a few of  
**Ann Arbor’s  
400+ restaurants**

See the Diego Rivera mural at  
the Detroit Institute of Art

Grab lunch at the  
Ann Arbor Farmers Market

# Learn how affordable a degree in education can be.

We understand that a U-M degree requires a financial commitment and strive to offer scholarships that help reduce tuition costs to make a Marsal School education affordable. All admitted students are considered for scholarships with no additional application. Selections are made based on criteria established within the school and by donors. **The Marsal School offered over 350 scholarships in 2023–2024.**

Many scholarships are need-based and students are encouraged to complete the Free Application for Federal Student Aid (FAFSA) as soon as it is available and no later than March 31. Visit the U-M Financial Aid page at [finaid.umich.edu](https://finaid.umich.edu) to explore the costs of a U-M education for in-state and out-of-state students and to link to the FAFSA using U-M's federal code 002325.



**TROY HERD**  
Master of Arts with Elementary  
Teacher Certification, '24

“The Marsal School of Education was a very supportive and affordable journey that really eased my experience overall. There are a plethora of scholarships and opportunities that definitely meet people where they’re at, and help them maximize their experience over time.”

# We personalize your financial plan to bring your educational goals within reach.

We have many options available to help you afford your education. Our Student Funding Program Manager will work with you to **develop a personalized plan that makes your education goals possible.**

Let's work together to customize a plan that works for you. Begin by emailing [marsal.scholarships@umich.edu](mailto:marsal.scholarships@umich.edu).



A scholarship of **25% the cost of tuition** is available to eligible members of the AmeriCorps community (including City Year and Teach for America).



**GO BLUE  
GUARANTEE**

**FREE TUITION**

For undergraduate families with household incomes of \$75K and less and assets below \$75K

**TEACH BLUE  
COMMITMENT**



**YOU COMMIT TO THE**

*teaching profession*

**WE COMMIT TO YOU.**

All Educator Preparation Program students qualify for financial support.

**\$9.3M**

**Total Scholarships**  
Offered in 2023–24

**364**

UNDERGRADUATE & GRADUATE  
**Scholarships**  
Offered

**100%**

of full-time Graduate Students  
**Receive Scholarships**

## Connect With Us

The Recruitment and Admissions Team looks forward to working with you.

Visit [marsal.umich.edu/admissions](https://marsal.umich.edu/admissions) to explore the many options to connect:

### Informational Sessions

Join other future students on a Zoom session to get a great overview of the academic program of your interest, admissions, financial aid, and student life.

### Meet with an Admissions Representative

Spend quality time sharing your interests in education and learning more about your next steps. Appointments can be scheduled in person, on Zoom, or on the phone.

### Meet with a Student Funding Representative

Discuss costs and discover the robust opportunities available to make your education affordable.

### Chat with a Current Student

Speak with one of our student ambassadors about their experiences in the Marsal School.

### Tour Campus

Take a 75-minute walking tour of central campus offered by the U-M undergraduate admissions office.

### Request Information

Share your contact information and academic interests to receive updates from the Marsal School.

### Apply Online

Visit our website to find program-specific application instructions.

Learn what makes the  
Marsal Family School of Education  
a globally recognized leader!



# Apply Today!

Application processes vary by program.  
Learn more at [marsal.umich.edu/admissions](https://marsal.umich.edu/admissions).

DEGREE PROGRAM	DEADLINES BY ENTRY SEMESTER		
Bachelor's	Summer (June)	Fall (Aug)	Winter (Jan)
Minor		Rolling	Rolling
Elementary Teacher Education		Feb 1*	
Secondary Teacher Education		Feb 1*	Oct 1
Teacher Education Preferred Admit		Feb 1	
LEAPS		Feb 1	
Master's	Summer (June)	Fall (Aug)	Winter (Jan)
CSHPE		Jan 2	Oct 15 <i>part-time only</i>
Educational Studies		Jan 2*	
ELMAC	Nov 15*		
SecMAC	Nov 15*		
Doctoral	Summer (June)	Fall (Aug)	Winter (Jan)
CPEP		Nov 15	
CSHPE		Dec 1	
Educational Studies		Dec 1	
JPEE		Dec 30	

*\*These programs encourage application submission by the deadlines above for optimal scholarship consideration. Applications may be accepted after these dates as space allows.*

Coming  
Fall 2025

## online master's degree

Leading Educational  
Innovation & Transformation



### • • Connect With Us

#### MORE INFORMATION:

#### BACHELOR'S OR MASTER'S

[marsal.admissions@umich.edu](mailto:marsal.admissions@umich.edu)

- • Meet with a recruiter:  
[meet.marsal.umich.edu/goblue](https://meet.marsal.umich.edu/goblue)

#### DOCTORAL

Education and Psychology (CPEP) | [cpep@umich.edu](mailto:cpep@umich.edu)

English and Education (JPEE) | [ed.jpee@umich.edu](mailto:ed.jpee@umich.edu)

Higher Education (CSHPE) | [cshpe.info@umich.edu](mailto:cshpe.info@umich.edu)

Educational Studies (ES) | [edstudiesphd.info@umich.edu](mailto:edstudiesphd.info@umich.edu)

# *Shaping*

**TOMORROW**

# TOGETHER.



UNIVERSITY OF MICHIGAN  
MARSAL FAMILY SCHOOL OF EDUCATION  
610 East University Avenue  
Ann Arbor, Michigan 48109-1259

734.615.1528 | [marsal.admissions@umich.edu](mailto:marsal.admissions@umich.edu)  
© 2024 Regents of the University of Michigan

V.09.05.2024

